

PART OF S.E. 1/4 OF N.E. 1/4
SECTION 20, T.6N., R.1W., S.L.B. & M.

IN OGDEN CITY
SCALE 1" = 50'

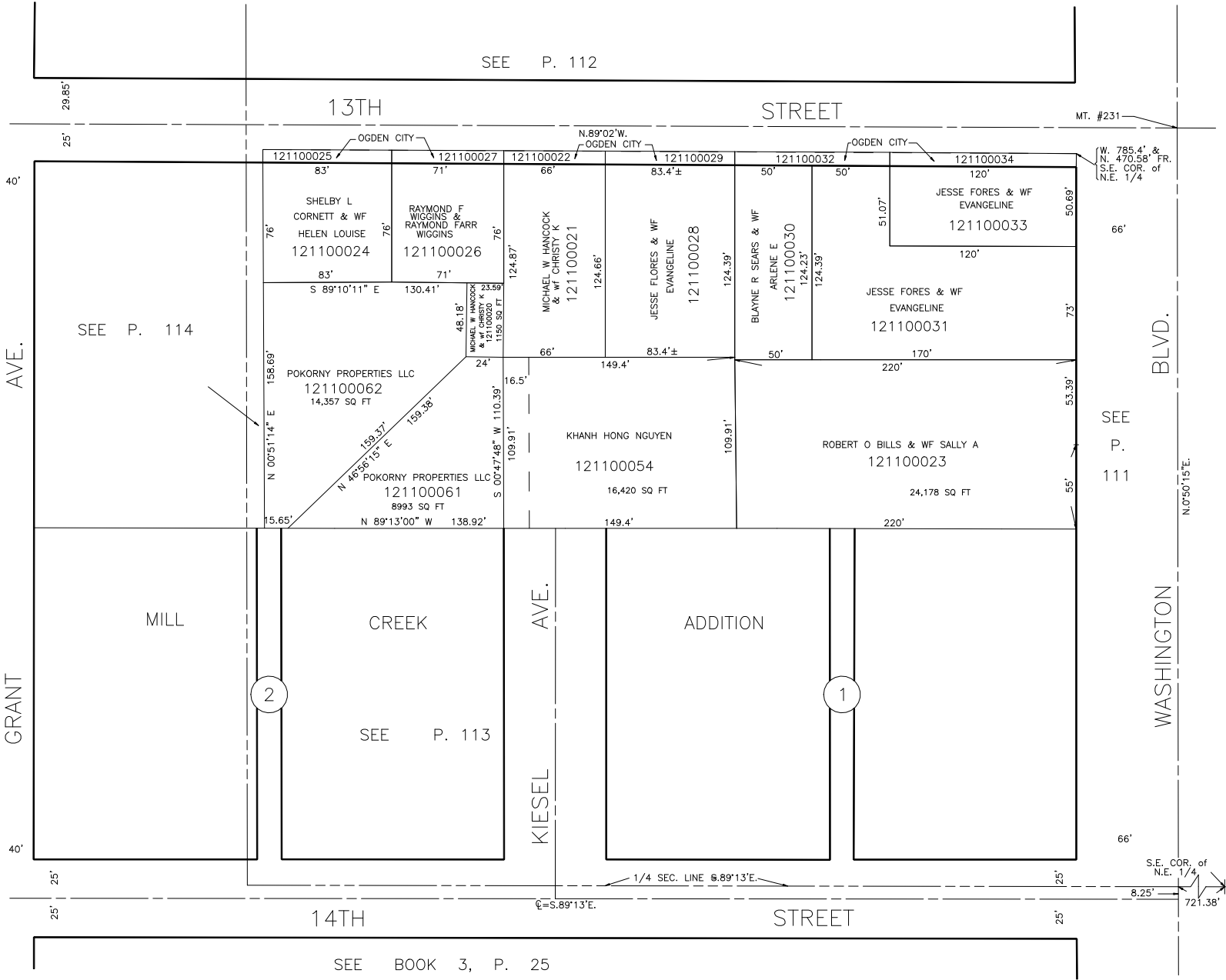
TAXING UNIT: 25

SEE P. 112

13TH

STREET

MT. #231



SEE P. 114

POKORNY PROPERTIES LLC
121100062
14,357 SQ FT

POKORNY PROPERTIES LLC
121100061
8993 SQ FT

MICHAEL W HANCOCK
& WIFE CHRISTY K
121100021
1150 SQ FT

KHANH HONG NGUYEN
121100054
16,420 SQ FT

ROBERT O BILLS & WIFE SALLY A
121100023
24,178 SQ FT

JESSE FORES & WIFE
EVANGELINE
121100033

JESSE FORES & WIFE
EVANGELINE
121100031

ARLENE E
121100030
124.23'

JESSE FLORES & WIFE
EVANGELINE
121100028

SHELBY L CORNETT & WIFE
HELEN LOUISE
121100024

RAYMOND F WIGGINS &
RAYMOND FARR WIGGINS
121100026

2

1

SEE P. 113

14TH

STREET

SEE BOOK 3, P. 25

BLVD. WASHINGTON

SEE P. 111

S.E. COR. of
N.E. 1/4
8.25' 721.38'